



# GAT MONTHLY MEMBERSHIP PROGRESS REPORT

Results as of: 4/30/2024

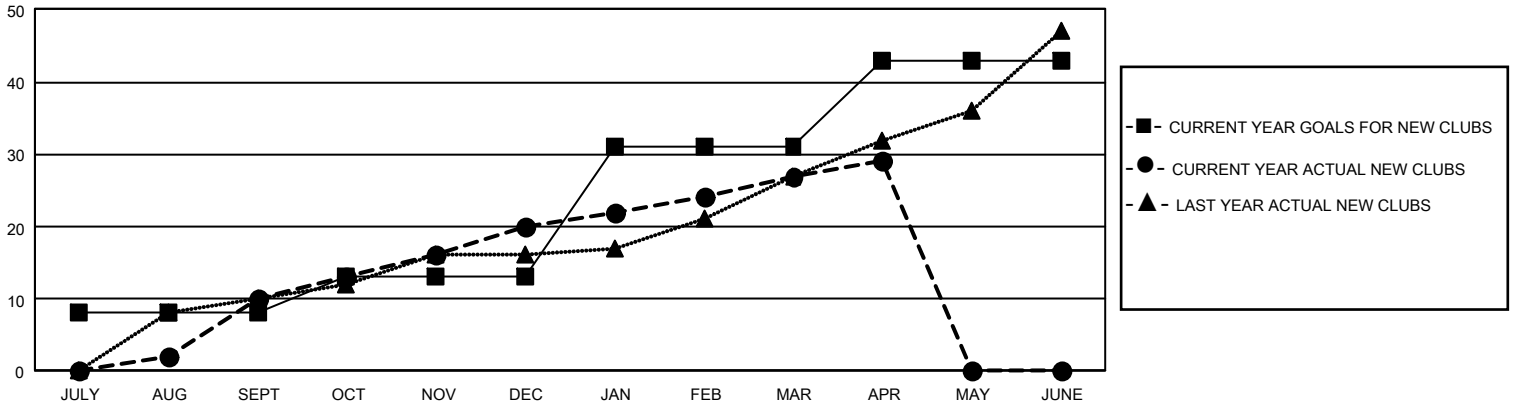
## GMT Constitutional Area 3, Group B

REPORT DOES NOT INCLUDE CLUBS IN UNDISTRICTED AREAS.

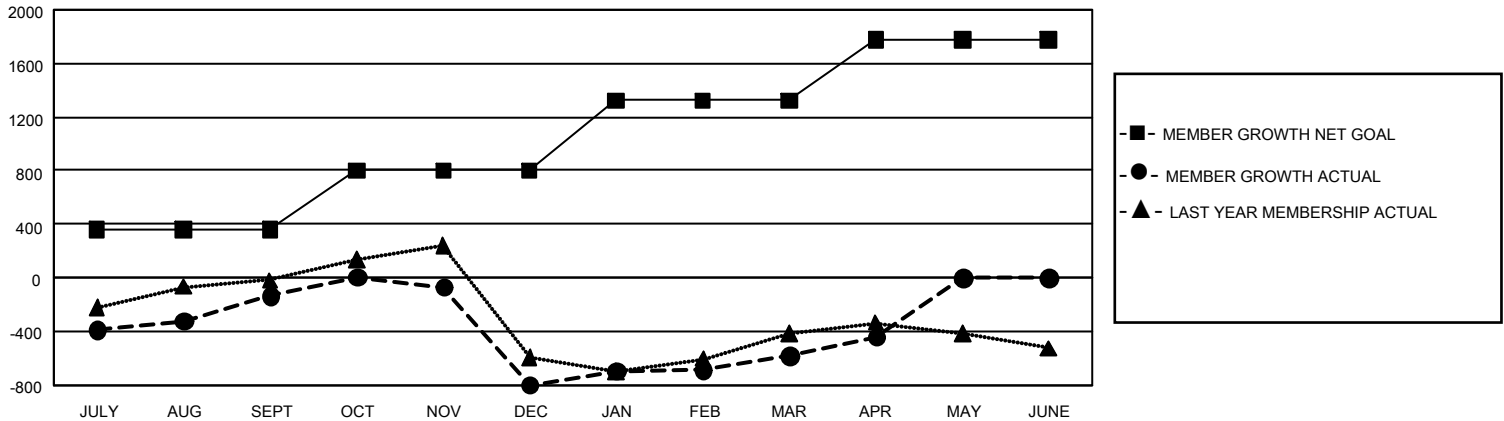
Clubs			
RESULTS FOR 2023-2024			
QUARTER	NEW CLUB GOAL	NEW CLUBS	DROPPED CLUBS
JULY/AUG/SEPT	24	10	6
OCT/NOV/DEC	15	10	19
JAN/FEB/MAR	54	7	3
APR/MAY/JUNE	36	2	0

Members			
RESULTS FOR 2023-2024			
QUARTER	MEMBER GROWTH NET GOAL	MEMBER GROWTH ACTUAL	DROPPED MEMBERS ACTUAL (including transfers)
JULY/AUG/SEPT	360	842	923
OCT/NOV/DEC	441	849	1,454
JAN/FEB/MAR	521	705	380
APR/MAY/JUNE	456	283	132

GOALS AND ACTUAL NEW CLUBS CUMULATIVE



GOALS AND ACTUAL MEMBERS CUMULATIVE



DROPPED CLUBS: 28	
<b>DROPPED MEMBERS</b>	
DECEASED	116
CLUB CANCELLED	380
OTHER	2,392
<b>TOTAL</b>	<b>2,888</b>

457 CLUBS OF 957 ADDED 1 OR MORE NEW MEMBERS

[CLICK HERE FOR CUMULATIVE MEMBERSHIP DATA](#)

GENDER DISTRIBUTION	
MALE	10,680 (41.79%)
FEMALE	14,871 (58.19%)
NON BINARY	0 (0.00%)
PREFER NOT TO ANSWER	3 (0.01%)
TOTAL FAMILY UNIT MEMBERS	6,166
FAMILY MEMBERS PAYING HALF DUES	3,613